

FED. ROAD DIST. NO.	STATE	PROJ. NO.	FISCAL YEAR	SHEET NO.	TOTAL SHEETS
	OKLA.				

DESCRIPTION	REVISIONS	DATE

Found ODOT Standard Brass Monument and two of the references per ODOT S.D. Form No. 1 for Station Number L-42-104, by J.P. Andrews per SWO 2788(1) Survey dated November 13, 1968, as filed with the Department of Libraries for the southwest corner of said section. Also found additional references by E.D. Hill, PLS 13, per CCR as filed with the Department of Libraries on April 7, 1986 for the southwest corner of said section. Accepted monument for corner assigned ODOT Station Number L-42-104.

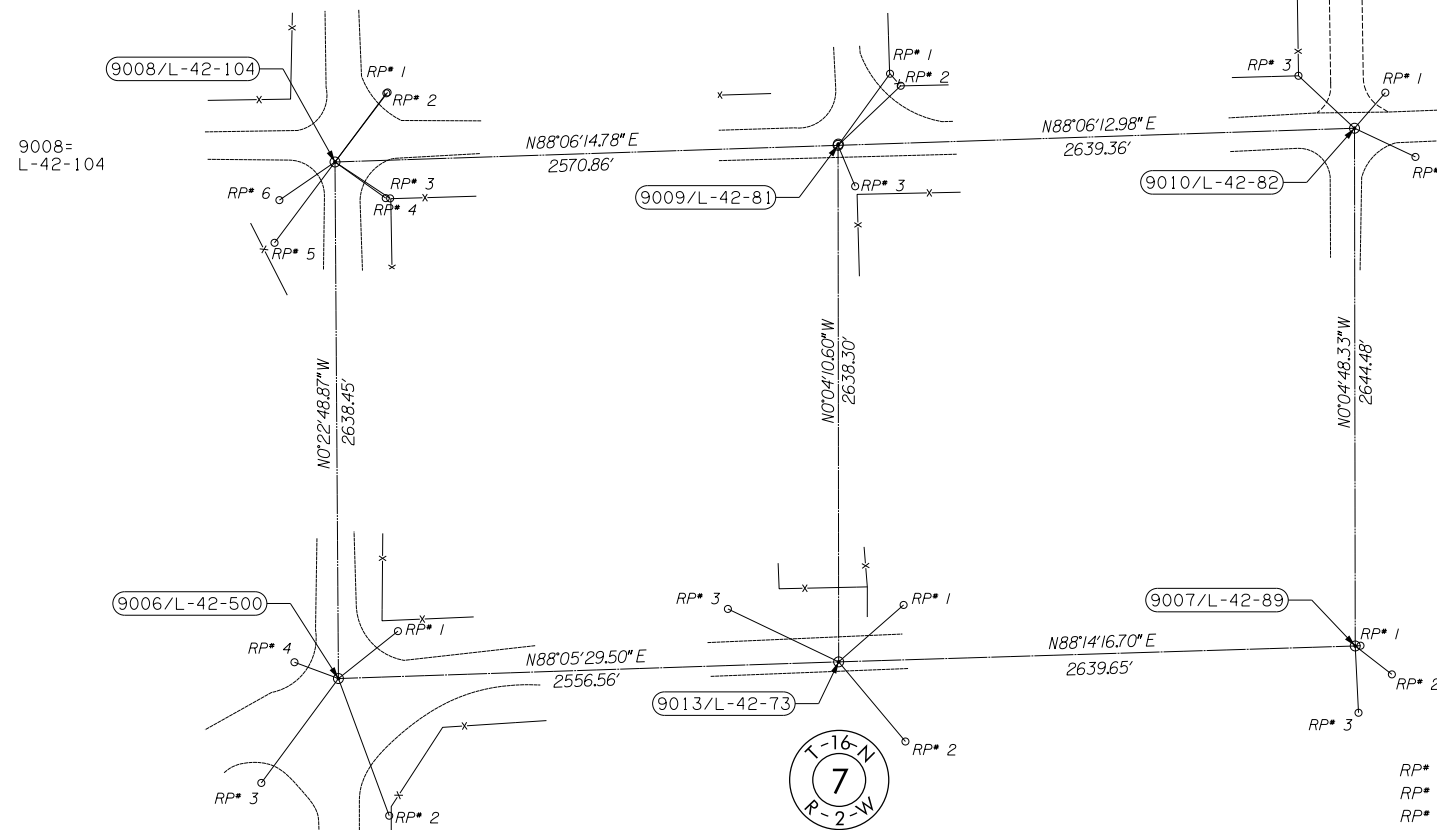
Found ODOT Standard Brass Monument per ODOT S.D. Form No. 1 for Station Number L-42-81, by J.P. Andrews per SWO 2788(1) Survey dated November 13, 1968, as filed with the Department of Libraries for the south quarter corner of said section and a 3/8" rebar bearing N128°28'52.50"E, 0.73 feet of said monument. Accepted monument assigned ODOT Station Number L-42-81.

Found ODOT 2" steel pipe and one of the references per ODOT S.D. Form No. 1 for Station Number L-42-82, by J.P. Andrews per SWO 2788(1) Survey dated November 13, 1968, as filed with the Department of Libraries for the southwest corner of said section. Also found 3/8" spike and other set inside of said 2" steel pipe and references by Justin L. Seared, PLS 1809, per Certified Corner Record (CCR) as filed with the Department of Libraries on January 17, 2000 for the southwest corner of said section. Accepted monument for corner assigned ODOT Station Number L-42-82.

RP# 1	48.68	N36°46'31"E	Fd #4 Rebar
RP# 2	49.49	N37°5'17"E	Fd 60d SW side PP 1.3high
RP# 3	37.49	S56°35'1"E	Fd #4 Rebar
RP# 4	35.35	S54°32'26"E	Fd 60d NW side PP 1.2high
RP# 5	57.27	S36°48'27"W	TOP NUT FH
RP# 6	38.27	S55°33'15"W	Fd 60d N side PP 1.0high

RP# 1	50.23	N35°58'3"E	Near face 6" Cor post
RP# 2	49.10	N46°27'58"E	Near face 6" Cor post
RP# 3	25.18	S22°40'28"E	Fd 60d N side PP 3.0high
RP# 4	0.73	N12°31'13"E	Fd #3 Rebar

RP# 1	26.73	N40°53'53"E	Fd 40d S side PP 1.0high
RP# 2	38.23	S64°47'50"E	Top Nut FH
RP# 3	43.57	N46°52'39"W	Near face 2" Cor post



Found 3/8" rebar by others, fits land ties per SWO 2788(1) Survey, by J.P. Andrews, completed January 24, 1969, as depicted in Alignment Book No. 1, Page 42 per said survey, for the west quarter corner of said section. Accepted said monument and assigned it ODOT Station Number L-42-500.

RP# 1	43.19	N51°28'3"E	Fd 60d S side PP 1.0 high
RP# 2	83.01	S20°18'55"E	Fd 60d W side PP 1.0 high
RP# 3	73.66	S36°27'5"W	NE Corner brlck sign
RP# 4	26.61	N69°40'7"W	Fd "X" E side HDWL

RP# 1	49.01	N48°45'8"E	Fd #4 Rebar
RP# 2	58.98	S39°58'34"E	Fd #4 Rebar
RP# 3	69.68	N64°27'37"W	Fd #4 Rebar

RP# 1	3.01	N86°48'13"E	Fd 2" pipe 1.0 high
RP# 2	26.32	S52°14'2"E	Set 60d W side 8" Hackberry 1.0 high
RP# 3	37.94	S2°49'7"E	Set 60d S side PP 2.0 high

Found ODOT Standard Brass Monument set in top of Original Stone per ODOT S.D. Form No. 1 for Station Number L-42-89, by J.P. Andrews per SWO 2788(1) Survey dated November 13, 1968, as filed with the Department of Libraries for the west quarter corner of said section. Accepted monument assigned ODOT Station Number L-42-89.

Found Oklahoma Department of Transportation (ODOT) Standard Brass Monument and all of the references per ODOT S.D. Form No. 1 for Station Number L-42-73, by J.P. Andrews per SWO 2788(1) Survey dated November 13, 1968, as filed with the Department of Libraries for the center corner of said section. Accepted monument assigned ODOT Station Number L-42-73.



SCALE: 1"=500'

NOTE: REFERENCE'S SHOWN ARE NOT TO SCALE.

PLS	GSR	OKLAHOMA DEPARTMENT OF TRANSPORTATION SURVEY DIVISION
DRAWN	JMW	SURVEY DATA SHEET
CHECKED		
APPROVED		
CREW	ElReno	
SWO 4432 (1) PROJECT NO. 21860(04) SHEET NO. 5016		